



SAINT JOHN WALL CATHOLIC SCHOOL

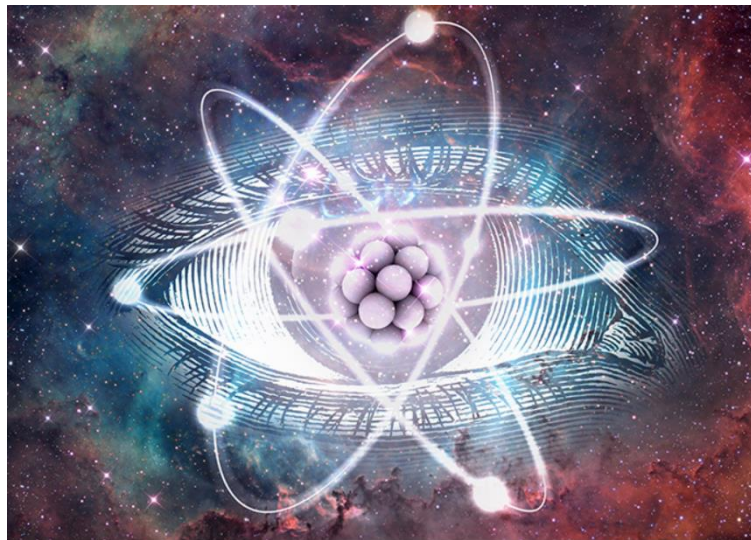
A Catholic School For All



Departmental Schemes of Work

Curriculum Intent: “To educate each and every unique child in our care to hear and respond to what God calls them to be”.

KS3 Science Y8



Year 8 Science Scheme of Work Overview

Sequencing of topics	Autumn term 1:Physics Autumn term 2:Physics Spring term 1:Biology	Spring term 2: Biology Summer term 1:Chemistry Summer term 2:Chemistry
Calendared assessments	Topic Tests are undertaken at the end of each topic within the subject. Whole school assessments; Physics and Chemistry Spring Term 2 Chemistry and Biology Summer Term 2	
Personal Development <i>(Cross curricular, SJW Values, SMSCV, cultural capital)</i>	Cross curricular links with maths SJW values are assigned to each topic SMSCV Throughout lessons and working together in practical work. Vocations are assigned to each topic Cultural Capital – Trips to BCLM	
Progression model	What knowledge will pupils develop? <i>(Including key terminology)</i>	What skills will pupils develop? <i>(Including literacy & Numeracy)</i>
	Pupils will develop their knowledge of energy, energy in the home, waves, sound, Inheritance, health and disease, photosynthesis, ecosystems, acids, alkalis, metal reactions, fuels, earth and atmosphere.	Pupils will develop practical skills, working with scientific equipment and learning to work in teams. Pupils will develop literacy skills using the departmental initiative of IDEAL. Pupils will learn numeracy skills from table reading, making different types of graphs, calculations and equations.
Development homework	Developmental homework will be online with Seneca and specific topic reading material. This will reinforce concepts taught in class and also stretch pupils with independent study on concepts not taught in class. The Seneca topics are pressure, uses of waves, relative motion, energy changes, biodiversity, conservation, transpiration, insect pollination, every day acids, uses of metals, ceramics, composites and rocks.	